

COMPACT DESIGN

FEL WITH 4 IN 1 BUCKET

POWER STEERING

DOUBLE AIR FILTER

4X4 DIESEL ENGINE

REAR 3 POINT LINKAGE

TWO SPEED PTO AND DRAW BAR

REAR 3 POINT LINKAGE

2 SETS REMOTE HYDRAULICS

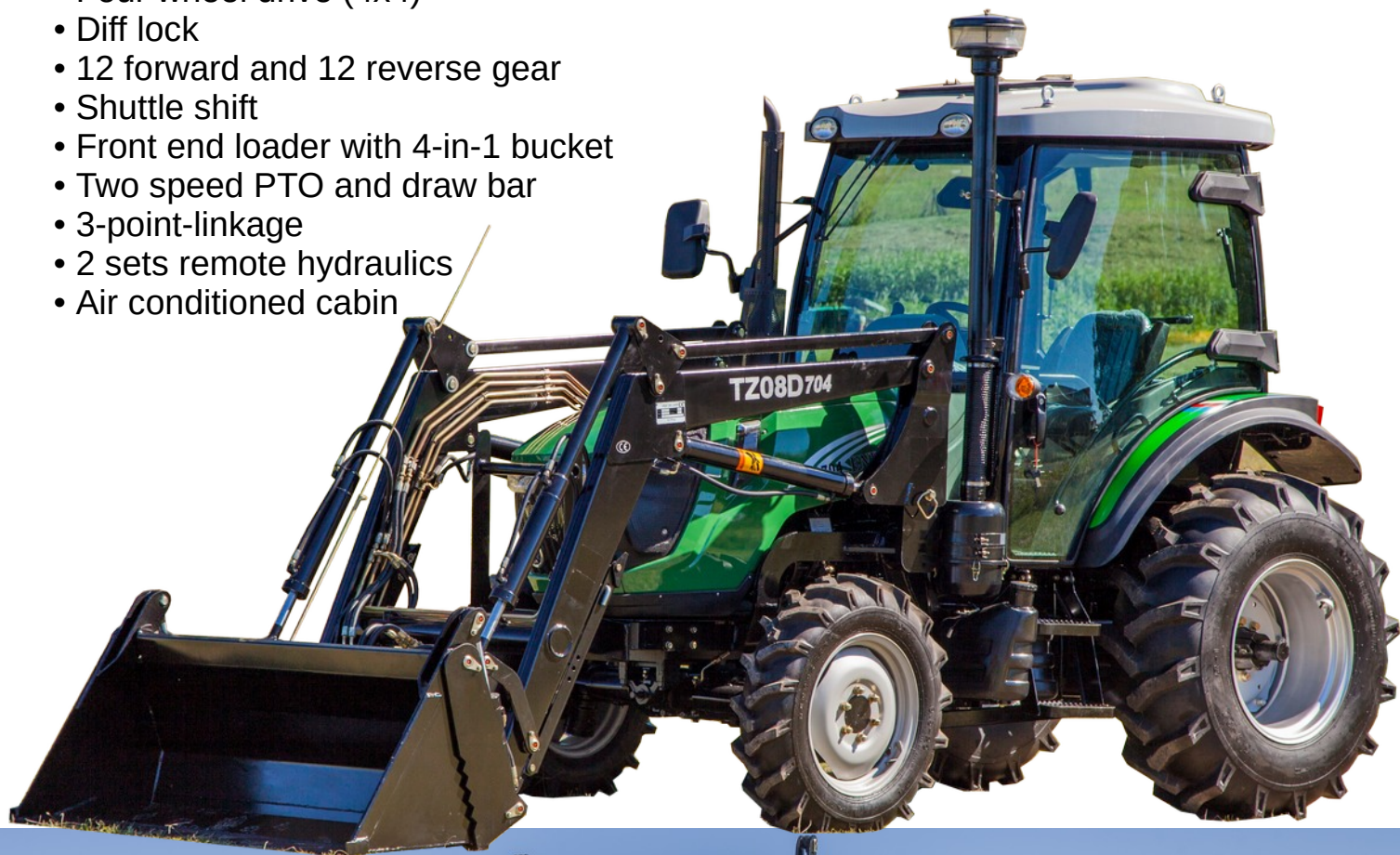
AIR CONDITIONED CABIN





Tractor Features

- 70HP Drivetrain
- 4 cylinder diesel engine
- Four wheel drive (4x4)
- Diff lock
- 12 forward and 12 reverse gear
- Shuttle shift
- Front end loader with 4-in-1 bucket
- Two speed PTO and draw bar
- 3-point-linkage
- 2 sets remote hydraulics
- Air conditioned cabin



DQ704C Specifications

Engine Specifications	
Make / Model	YTO YT4B4
Cylinders	4
Type	In-line,Natural aspirated, 4 Cylinders,Water Cooled and 4-stroke
Power (KW/RPM)	51.5 / 2200 (70HP)
Fuel Tank Capacity	150L
Dimensions (excl FEL)	
Machine size (mm) (L x W x H)	3900 x 1950 x 2700
Weight (kg)	2120
Wheel base (mm)	1930 – 2130 max
Front / Rear track (mm)	1340 / 1090
Min. Ground clearance (mm)	350
Agricultural Tyre size (inch) (front / rear)	9.5 - 20 / 16.9 - 24
Industrial tyre size	10.5/80 - 18 / 14.9 - 24
Transmission	
Type	Sliding sleeve
Gears	12 forward / 12 reverse
Shuttle Shift	Yes
Max speed (km/h)	32
Clutch type/size	Dry-friction, 2 stage, ceramic disc
Braking and steering	
Braking system	Wet type, disc brake
Steering type	hydraulic
Steering angle	Front axle. Max 50 degrees
Working Device	
PTO Type	540/760 rpm x 6 spline 35mm shaft, clockwise rotation
PTO Speed (rpm)	540/760
Hydraulic output valve	Two groups
Hydraulic output flow rate (L / min)	32
Rear lifting capacity (kg)	1223.66

Front End Loader		
Front end Loader Model	WS0800	
Matching Tractor	DQ704	
Specification	Unit	
Max lifting height at implement pivot pin	mm	3110
Dumping Height	mm	2470
Overloading Height	mm	2930
Dumping Distance	mm	640
Ground Clearance at Arm Pivot Pin	mm	1500
Max.Tip in Angle	degree	48
Tip out Angle	degree	58
Crowd angle at lowered lift arm	degree	135
Digging Depth	mm	120
Lifting Force at implement pivot pin	kg	2150
	kg	1286
Bucket Width	mm	1700
Bucket Capacity	m3	0.44
Safe lifting weight	kg	800



ShuttleShift



Flat to Sloped Terrain



Power Steering



Category 1

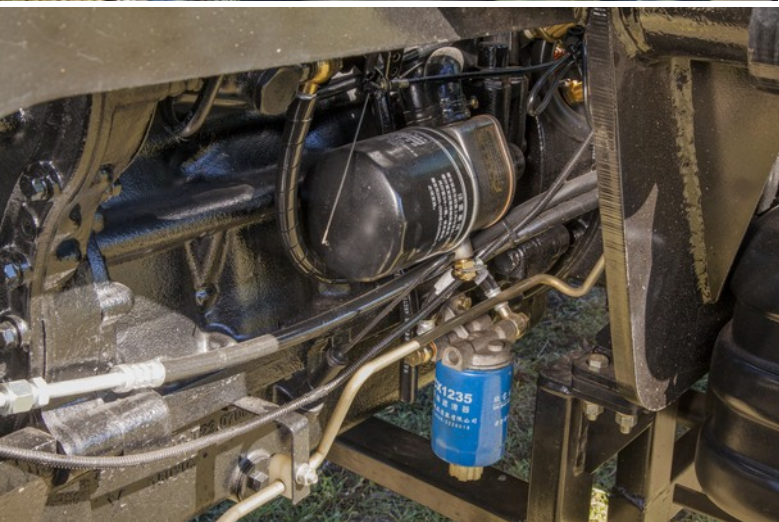


Includes 4-in-1 Front End Loader



With Diff Lock







2 / 2 Summerholm Road
Hattonvale, QLD, 4341

07 5465 6583

sales@agking.com.au

www.agking.com.au

Ag King is an Australian owned and operated business which sells and services a range of quality farming equipment. Ag King specialises in tractors and their implements and pride ourselves on delivering high quality products at competitive prices. Based in the Lockyer valley near Brisbane in Queensland, we sell direct to public but can arrange for delivery Australia Wide. With many years of experience in the agricultural equipment business our staff thrive on providing our customers with the best possible levels of service.

We have a wide range of products available including Slashers, Post Hole Diggers, Buckets Scoops, Carry-Alls, Grader Blades, Rippers, Cultivators, Rotary Tillers, and many other 3 point linkage and front end loader implements. We also stock a large range of spare parts for all the equipment we supply.

AG King holds parts in Australia for all the tractors and implements we sell. Not only do we supply parts for our range of Chinese tractors but we also supply parts for most of the Chinese brands sold in Australia. We are committed to excellent after sales service and support.

Although we are backed by huge factories we know that when things go wrong you want to talk to someone who is local and can help with service.

Our warehouse is located in the Lockyer Valley, on the Warrego Highway.

If you're after a spare part or consumables for one of our Tractors or Implements, give us a call or drop in.

Parts and Consumables for our Tractors and Implements are kept in our warehouse at Hatton Vale and shipped Australia Wide

